

SMITTY BEAR

pcbangles sewing pattern

★ *Suitable for beginners*



Smitty is a little 5 inch bear with thread jointed limbs. With no joints to fit and using very little fur/fabric he is ideal for beginners. Seasoned bear makers can skip my instructions but if this is your first bear, you should find them helpful (I hope !)

If you embroider his eyes, rather than using beads, he can join younger children.

Small enough to make from offcut fur or plush, he is best hand sewn. Mixing and matching furs will create a cute patchwork bear. Use 3 or 4mm sized beads for his eyes

Inner ears and footpads—use the back of the fur.

Copyright reserved 2019 Angela Jardine

www.pcbangles.uk

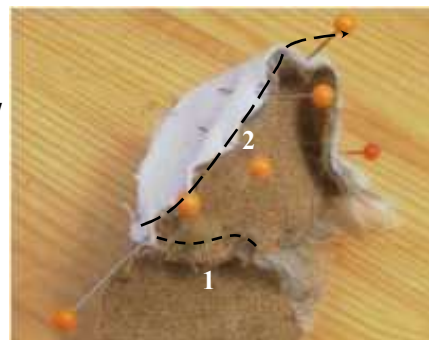
CUTTING OUT

Each pattern piece already allows for a 1/4 inch (5mm) seam allowance. .

- Check the direction of your fur and place this face down to work on the back of your fabric
- Pin each piece to the fabric and, with a coloured pencil, draw around the pattern pieces on the back of your material. *Make sure to turn pieces so that you have all the "lefts" and "rights"*
- Carefully cut out the pieces just on or inside your drawn lines.

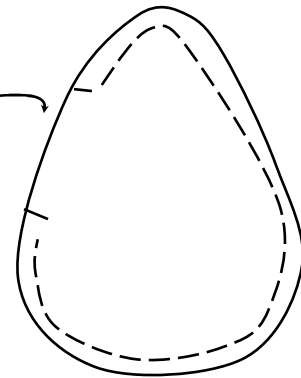
MAKING UP THE HEAD:

- Pin both side heads with the right sides together and tack from the tip of the nose down to the neck edge. Then sew this seam. (1)
- Pin and tack the center head pieces between the two sides. *Easier to start from the nose and work back each side*
- Ease the center and stitch to finish (2)
- Turn the head through to the right side.



BODY :

- Stitch the tiny dart at the top of each body piece and stitch the body pieces (right sides together) *leave a small opening at the back for stuffing (shown by two marks on the pattern piece).*
- Turn the body through to the right side.



LEGS AND ARMS:

- Pin, tack and stitch both legs right sides together— *Leave a small opening at the back of the leg as marked on the pattern*
- Do the same for both arms, *again, leaving the small gap at the back of the arm for stuffing*
- Turn the arms through to the right side, but leave the legs inside-out just now
- Carefully ease and pin the foot pads to the bottom of each leg. *it helps to pin the centre front and back first*
- Stitch from the centre front of the paw to the back on each side
- Turn the legs through to the right side and tweak any caught fur in the seams



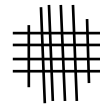
STUFFING:

- Stuff both legs firmly and close the opening at the back.
- Stuff the arms next and close the openings at the back here too.
- Next, stuff our little bear's head—quite firm to touch, *especially in the nose area where we are going to embroider.*
- Stitch around the neck opening, pulling as you go. *You may need to work around this opening two or three times to finally close it completely.*
- Decide on eye position. *helps to use two large glass headed pins if you have them to experiment. I've placed the inside the head seams, on the center head, but you can give your bear a wider-eyed look if you prefer.*



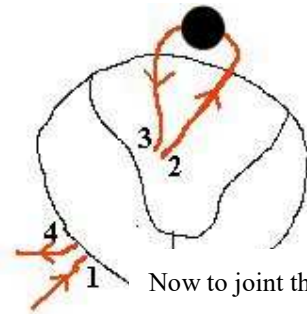
EMBROIDER THE EYES

Use embroidery thread and sew small horizontal stitches at each eye position. Work over these with another layer, this time using vertical stitches. Keep your stitches as close together as you can to create a nice dark, beady eye. *If you shorten the outer stitches you can create a nice, round looking eyes.*



OR

- Using a strong, doubled thread on your needle, enter from the bottom of the head (1) and exit at one eye position (2)
- Thread your bead (3) and go back through the same needle point. Exit under the head a small way (5mm) from your original entrance point (4).
- Pull both threads, gently pulling until they sit snugly against the head (the head may indent slightly, that's fine :)
- Tie a half knot and check the eye is still sitting correctly, then complete the knot and add one more for extra security. Do not cut the threads yet.
- Do the same for the other eye with another length of strong thread.
- Then take all the loose threads back through the head, pull them taut and snip them close to the head so they are hidden and spring back inside.



Now to joint the limbs....

- With strong thread take a small
- Take the thread all the way through
- Go back through the body and
- Repeat 2 or 3 more times, pulling
- Finally tie the thread securely *both legs should be nestled against his body. Can be floppy, or firm depending upon your preference*
- Do the same with both arms

JOINTING THE HEAD:

- Take your strong thread and a long needle and entering through the body opening, bring this out at the top of the body (dart position)
- Take a small stitch into the bottom of the bear's head (where we closed the opening earlier) and bring the needle back down through the top of the body again
- Repeat two or three more times, pulling the head to join the body each time.
- Next, tie the ends of the threads inside the body securely *The threads can be left tucked inside*
- Stuff your bear's body and close the opening



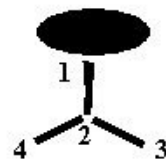
NOW TO JOINT THE LIMBS :

- With strong thread take a small stitch into the upper inside of a leg (1)
- Take the thread all the way through the body (2) and a small stitch into the other leg (3)
- Go back through the body and the first leg (4)
- Repeat 2 or 3 more times, pulling gently as you go
- Finally tie the thread securely *both legs should be nestled against his body. Can be floppy, or firm depending upon your preference*
- Treat the arms in exactly the same way.

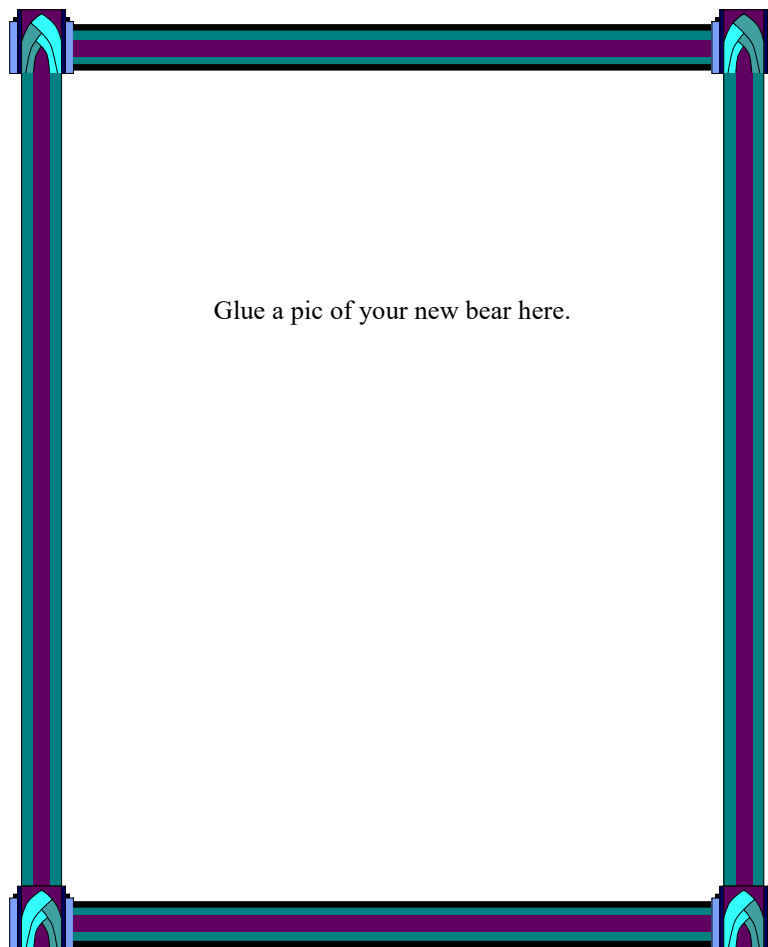


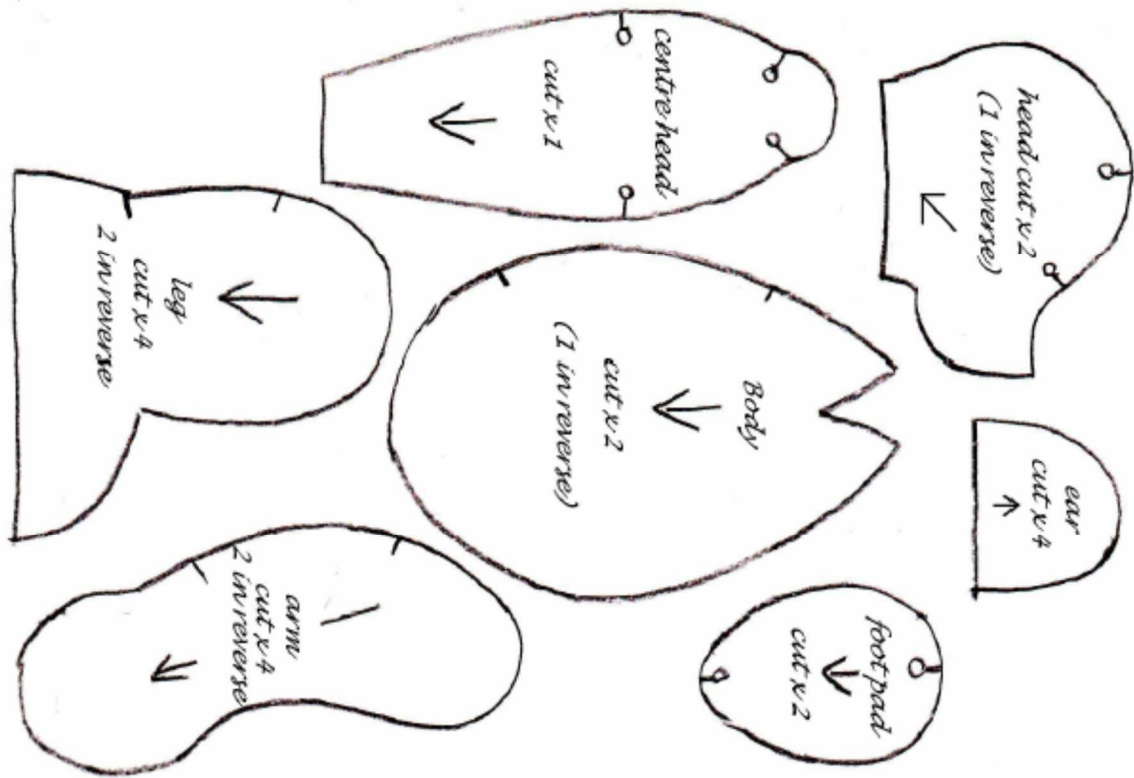
TO FINISH :)

- Pin and stitch both ears (right sides together), turn right sides out and oversew to close the opening. *Remember, that if you want the inner ears in contrast and are turning to the back of your fabric, place the one half with the BACK of the fabric to the fur side.*
- Stitch these to the head using a small oversew stitch. Always a good idea to sew a second set of stitches along the back of the ear too - this always seems help them stand proud :)
- Choose an embroidery thread for the nose and using a vertical satin stitch, keep stitches close together so no fabric shows through. Add as many layers as you are happy with to make the nose stand proud.
- With three simple stitches, create your bear's mouth. One down the front head seam, under the nose, with two at the end swinging out either side (these can face down, or up depending upon the character you would like your bear to have)
- Use your embroidery thread to add three claws on each paw and footpad.



Congratulations! You should now have a floppy little bear sitting before you. I hope you enjoyed making him





Printing Instructions:

Pattern sheet prints to standard A4 : Portrait
You may need to set your printer to "print to full page" or "resize to page"

Smitty's pattern pieces themselves should only take up an A5 sheet (half standard A4 printing paper).

